

CORIOgrapher™ (v2.9.3.3)

This software is for:

- Hardware: CORIOmaster™ (C3-540), CORIOmaster™ mini (C3-510), CORIOmaster™ micro (C3-503), and CORIOview
- Firmware [CORIOmaster] : M406 or later
- Firmware [CORIOview] : M409 or later
 - use CORIODiscover v1.6.2.1 or later to update to this firmware
- Software: CORIOgrapher v2.9

- ✔ For help with connecting, setting up, and using CORIOgrapher, see CORIOgrapher Help, or the Quick Start Guide that came in the box.

Downloads

Download the latest firmware here: tvone.com/firmware-updates

Download the latest software here:

CORIOgrapher:

<http://tvone.com/tech-support/software/183-coriographer-software>

CORIODiscover:

<http://tvone.com/tech-support/software/185-coriodiscover-software-download>

Previous releases

Read details on previous releases here:

<http://tvone.com/tech-support/software/183-coriographer-software>

Contact us

www.tvone.com

tvONE NCSA
North, Central and South America

✉ Sales: sales@tvone.com
Support: tech.usa@tvone.com

tvONE EMEA
Europe, Middle East, Africa and Asia Pacific

✉ Sales: sales.europe@tvone.com
Support: tech.europe@tvone.com

CORIOgrapher (v2.9.3.3)

Released by: Neil Baptiste

14/Feb/2020

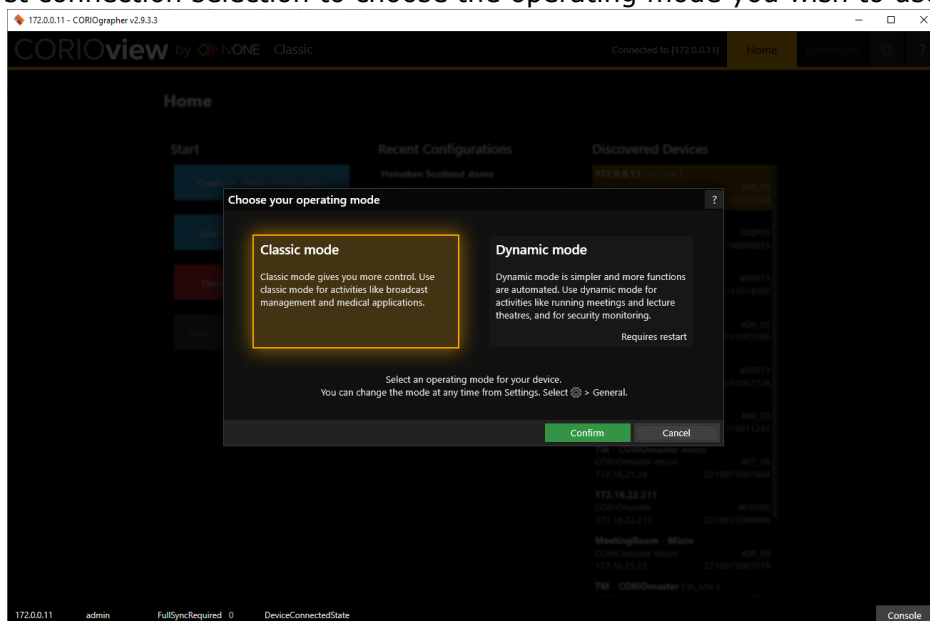
[New Features CORIOview M409 and above only]

Dynamic Mode:

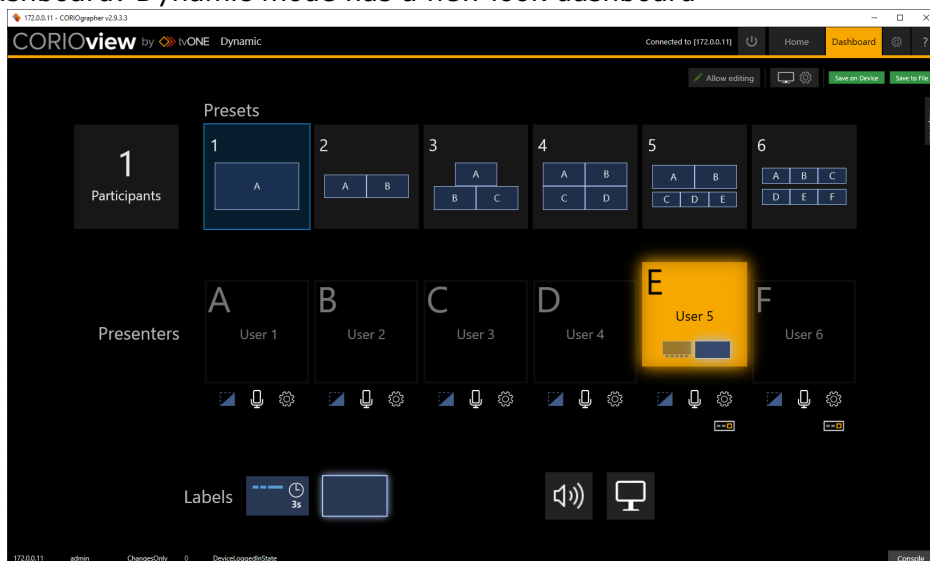
- Support for CORIOview in either Classic or Dynamic operating mode when connecting to a CORIOview device or when creating on offline configuration
 - You can change the mode of the device from the Settings | General page
 - The current mode of the device is also displayed in the header bar



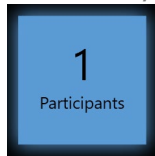
- First connection selection to choose the operating mode you wish to use



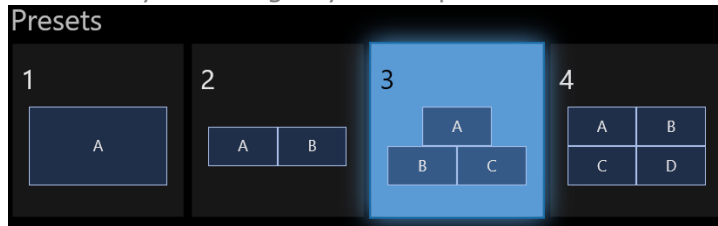
- Dashboard: Dynamic mode has a new look dashboard



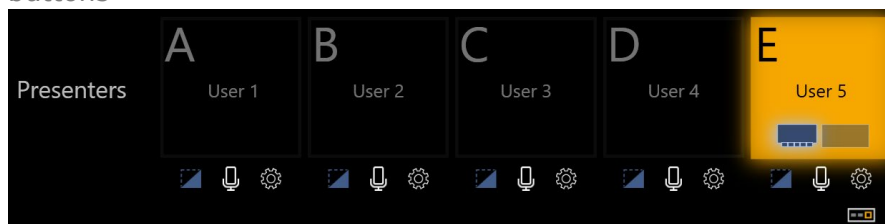
- Dashboard: Lobby mode shows all connected
 - Enabled by selecting the Participants button



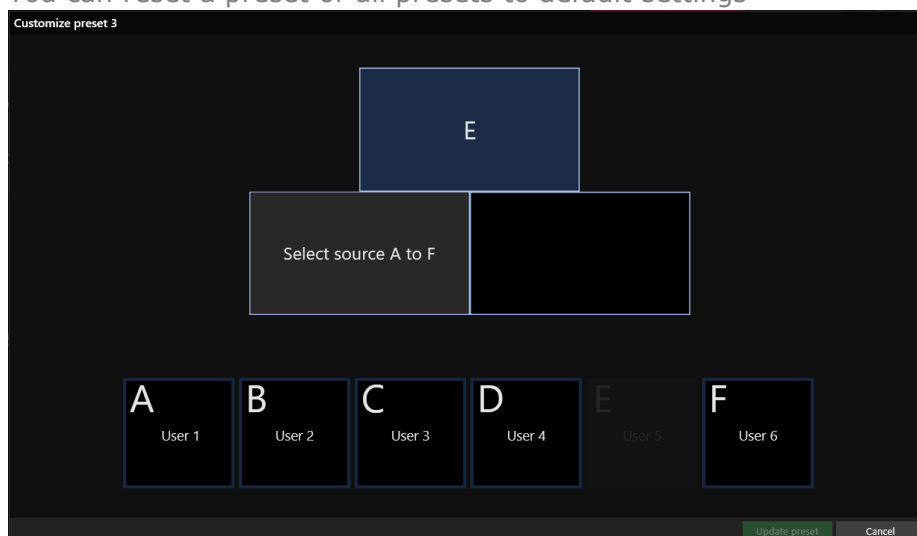
- Dashboard: Preset mode shows the selected preset
 - Enabled by selecting any of the preset buttons



- Dashboard: Presenter mode: Show the selected presenter
 - Enabled by selecting any of the presenter buttons
 - Toggle between full screen and selection mode by selecting the presenter buttons



- Dashboard: Preset layout can now be customized
 - To customize a preset, you must first enable Allow editing from the dashboard
 - You can reset a preset or all presets to default settings



- Dashboard: Labels can be switched on or off
 - Labels will re-enable if they were automatically disabled when entering presenter full screen mode



- Dashboard: You can mute audio and cut output to black

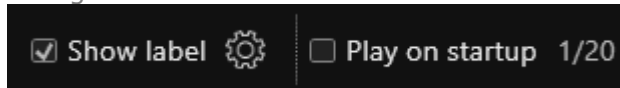


- Dashboard: Show output settings



AVIP:

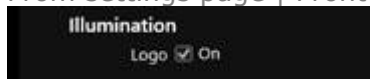
- AVIP module now supports labels.
 - You can enable or disable the label per channel.
 - Settings to change the position, size, format, custom text, border color, and border width.
 - Available as either white text on background or black text on white background



- Low latency profile is now available for all stream types

General:

- It is now possible to turn off the illuminated tvONE logo on the front panel
 - From settings page | Front Panel | Settings:



- Standby mode has been updated
 - You can no longer control a device that is in standby mode
 - CORIOgrapher will disconnect from the device when entering standby
 - When connecting to a device in standby, you will be prompted to power up the device
- When selecting Connect after logging in, you will now be directed to the Settings page by default.

- Custom resolutions are not supported on the output but are still allowed for inputs.
 - Supported output resolutions:
 - 720p @ 29.98Hz to 60Hz
 - 1080ip @ 29.98Hz to 60Hz
 - 2160ip @ 23.98Hz, 24Hz, 25Hz, 29.97Hz and 30Hz.

Fixed

- CORIOgrapher prompts when loading a config file and connected to a device that it is not compatible with connected device. (ref: 807432)
- After closing the Equipment Manager when selecting X (and not Close) resulted in errors when reading from device or loading a config. (ref: 807375)
- Selecting multiple windows or displays caused all selected windows or displays to match the rotation angle of the first selected window or display. (ref: 806523)

Notes

Known issues:

- Encoder Manager dialog uses tabs and the tab default behavior changes the selected tab highlight when the mouse is over child items.
- Third-party ColorPicker control is difficult to customize so the Advanced section has some dark text on a dark background.
- Application Window title bar is not themed, will do at some point just takes a bit of time to duplicate the existing look and behavior correctly.
- Canvas Cut-to-black will overwrite the current output cut-to-black and canvas audio mute values. The hope is to have this behavior supported by the firmware in a post 406 release, so the current values can be maintained.